

MS/AL Radiation Oncology Research Partners

CDRP Meeting

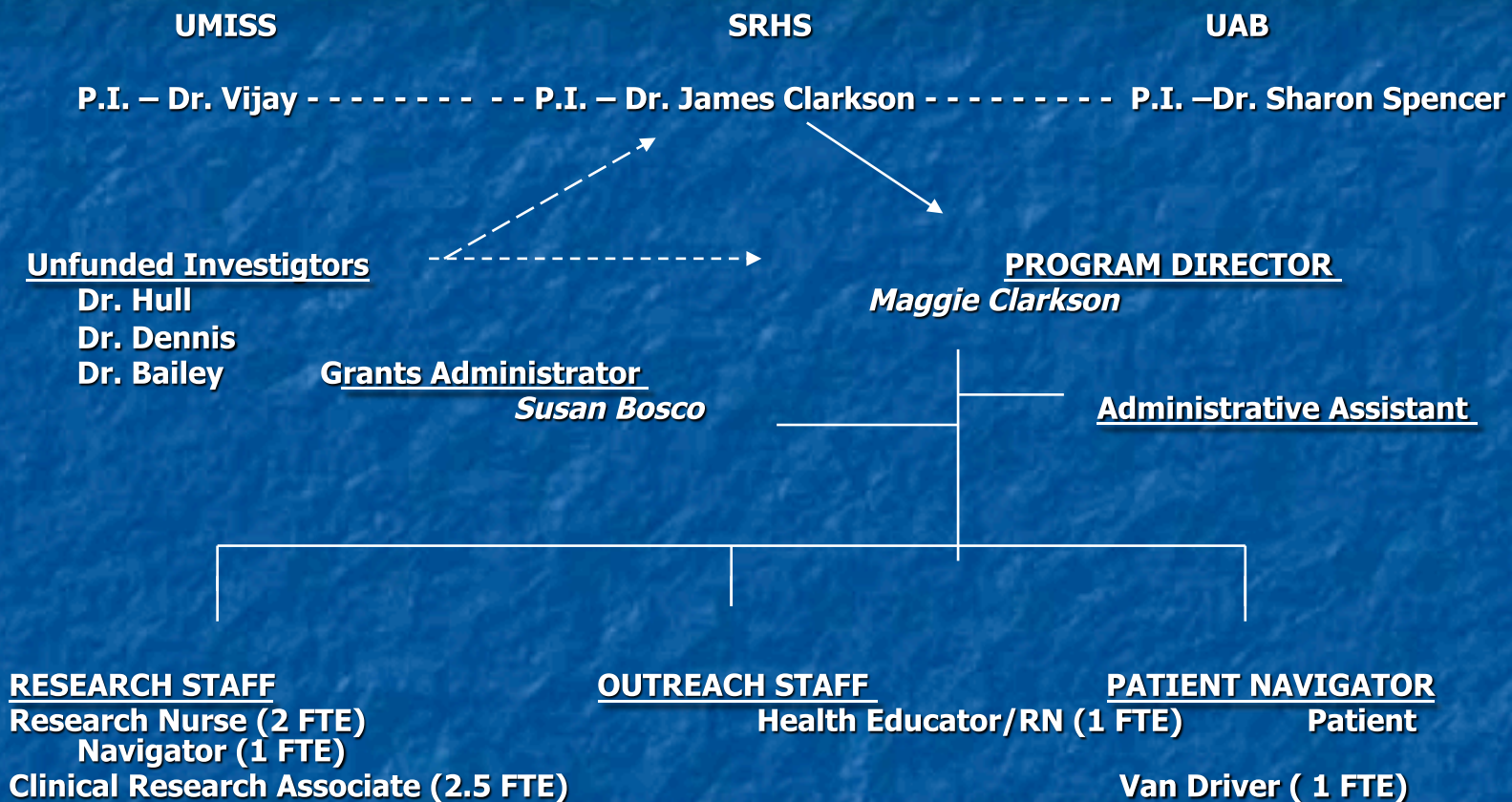
June 18, 2010

RTOG Meeting, Philadelphia

Current Status

- Final report for U56 award submitted 6-1-2010
- Annual report for U54 Year 1 submitted 6-1-2010
- Activation of U54 award effective 9/15/2009 with operational support only for clinical research infrastructure up thru 2/28/2010
- U54 Support for Patient Navigator and Community Outreach ends 7-31-10
 - Decreased U54 funding resulted in loss of PN and Outreach support
- Ongoing support for Clinical Research thru completion of U54
- New PI effective with U54

MS/AL RADIATION THERAPY RESEARCH PROGRAM ORGANIZATIONAL CHART



Study Activations

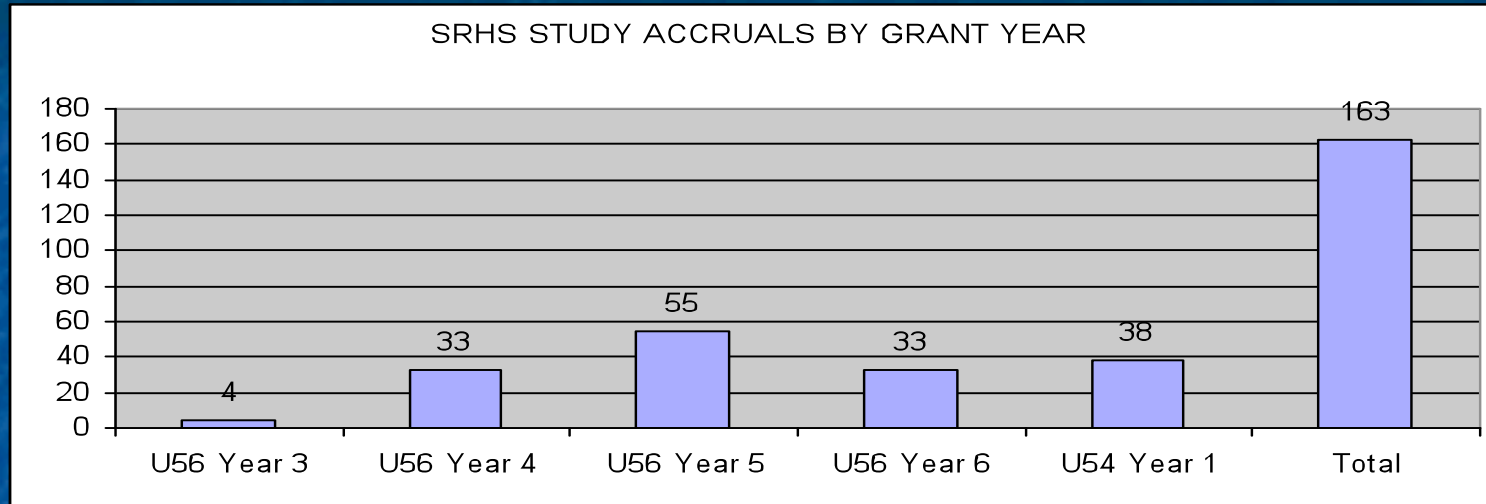
YEAR OF STUDY ACTIVATION

STUDY TREATMENT	FY 2004	FY 2005	FY 2006	FY 2007	FY 2008	FY 2009	FY 2010 *	TOTAL BY TRX TYPE
Investigator-Initiated	0	0	0	1	0	0	0	1
Radiation Only	0	1	2	0	5	3	1	12
Surgical Only	0	0	0	1	0	0	0	1
Surgery + Medonc	0	0	0	1	0	1	0	2
Medonc only	0	2	10	15	10	12	8	57
Medonc + Radiation	0	0	3	4	1	4	3	15
Medonc + RT + surg	0	0	0	0	0	1	0	1
Cancer Prevention	0	0	0	0	0	0	0	0
Cancer Control/ Symptom Mgmt	0	0	2	2	1	4	0	9
Industry/Pharma	0	0	3	1	1	0	0	5
Totals		3	20	25	18	25	12	103

Evaluation Issues/Metrics in U54

- **Acuity** of study activations – DO WE HAVE A TOOL??
 - Adaptation of RTOG model for all CDRP sites as a metric
- Combination of Treatment and Cancer Control endpoints in same study – how do we categorize for reports?
- Amendments/revisions/AE reports = MAJOR RESOURCE ALLOCATION not reflected in current evaluation

Accruals



Evaluation Issues

- Need **acuity** system to reflect resource allocation
 - Adjuvant vs metastatic vs multimodality vs trx duration vs investigational drug vs RT trx method vs molecular markers vs
- No measure of patients beyond initial timepoint = accrual
 - **Follow-up** required from 1 month post trx thru q3ms to q6ms to annual for ___ years (currently 72 active followup cases)
 - No reflection of **duration of therapy** with ranges from 6 weeks to 7 years (currently 44 active treatment cases)
- Multiple accrual patients – How do we track??

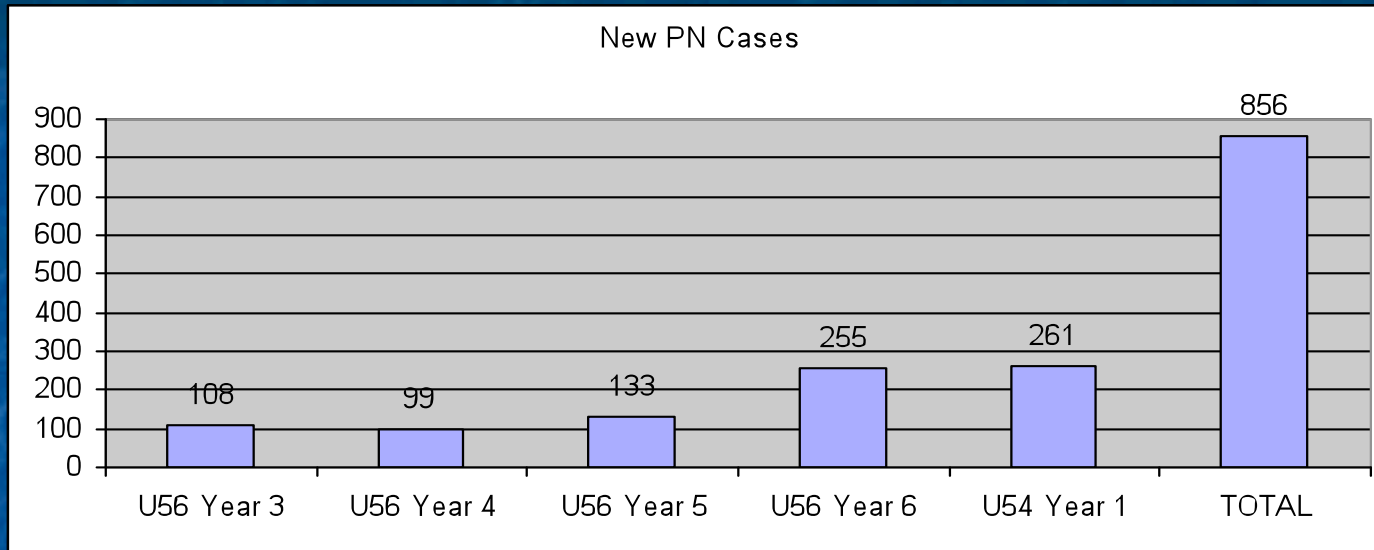
Community Outreach Participants by Race

	African American	Caucasian	Hispanic	Asian	Other
Yr 03	396	528	0	6	0
Yr 04	1011	1086	44	6	3
Yr 05	730	507	23	8	10
Yr 06	634	1061	74	22	27
Yr 01 U54	139	217	25	4	3
TOTAL	2910	3399	166	46	43

Evaluation Issues/U54 Program Plans

- Collaborations with expanding networks beyond Jackson County as SRHS expands catchment area
 - George and Harrison Counties, Grand Bay
- SRHS Employee "Inreach Program" via SRHS Wellness Center
- Involvement with advocacy groups
 - Leukemia/Lymphoma Society, MP3C (state), VOAD, ACS, Black Ministers Alliance, Moss Point Visionary group

Patient Navigation



Evaluation Issues/Program Plans for U54

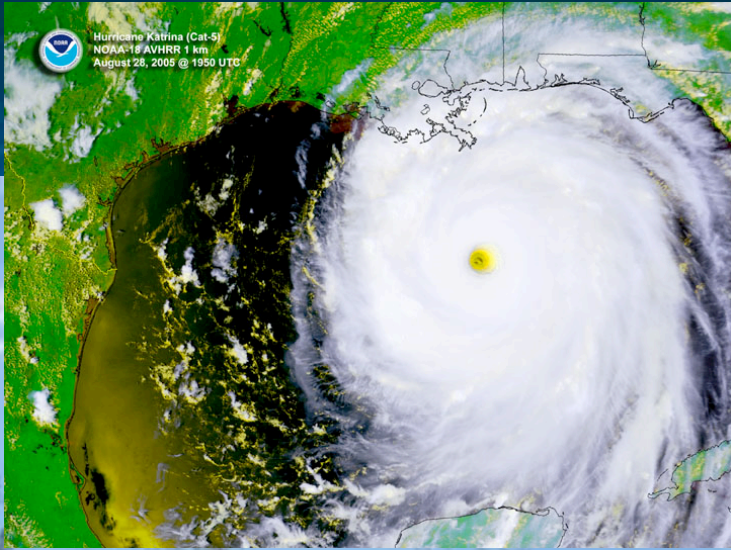
- Community Advisory Group with liaison to MAG
 - Building on Legacies Patient Advocacy group
- Clergy Workshop: Cancer 101
 - Clergy Community Advisory Group
- Expansion to 2 FTE's (un-funded) to cover OSH clinic
- No funding – data collection, management, reporting issues

Special Projects & Program Highlights FY2010

- Cancer Care Workshop for Clergy: Health and Healing Intertwined
 - January and June – anticipate quarterly workshops
 - Establishment of Clergy Community Advisory Group
- Legacies Patient Advocacy Program
 - Subset of breast patients to expand to perioperative timeframe
 - Involvement with clergy workshop
 - Averaging 5 referrals monthly + weekly chemo class
- Disaster preparedness for vulnerable populations
 - Elderly, cancer, chronic disease
 - Project RECONNECT – Baylor and ICC post Katrina in gulf states
 - Project Grab & Go – SRHS program under Project RECONNECT
 - SECURE project – MD Anderson, Baylor, Tulane, Meharry, U of Miami – expansion of Project RECONNECT

Partnership Plans Moving Forward

- Grant submissions to maintain and strengthen infrastructure support for collaborations with partners
 - Joint Pilot projects for community programs (R21)
- Activate Investigator-initiated studies developed by academic partners that match SRHS patient populations
 - Focus on multimodality studies, ENT and GYN
- Develop SRHS as a clinical rotation for Radonc and Medonc Fellows interested in community-based practices
- Establish monthly tumor boards for select disease sites with limited care options at SRHS
- Grant retreat scheduled for August 2010



CUMULATIVE NUMBER OF PATIENTS ACCRUED TO CLINICAL TRIALS BY RACE/ETHNICITY FOR YOUR SITE (AS OF MAY 31, 2009) FOR U56 OR NEW U54 FY2010 GRANT PERIOD

Race/Ethnicity	Total Number of Patients Accrued to all Types of CDRP Clinical Trial	
	End of U56	U54 (FY10)
American Indian/Alaska Native	0	0
Asian	0	0
Native Hawaiian or Pacific Islander	0	0
Non-Hispanic Black or African American	22	3
Non-Hispanic White Total	88	28
# Elderly (>65)	42	11
# Uninsured/underinsured/poor	61	17
Hispanic/Latino	0	0
Unknown	0	0
Total	110	31